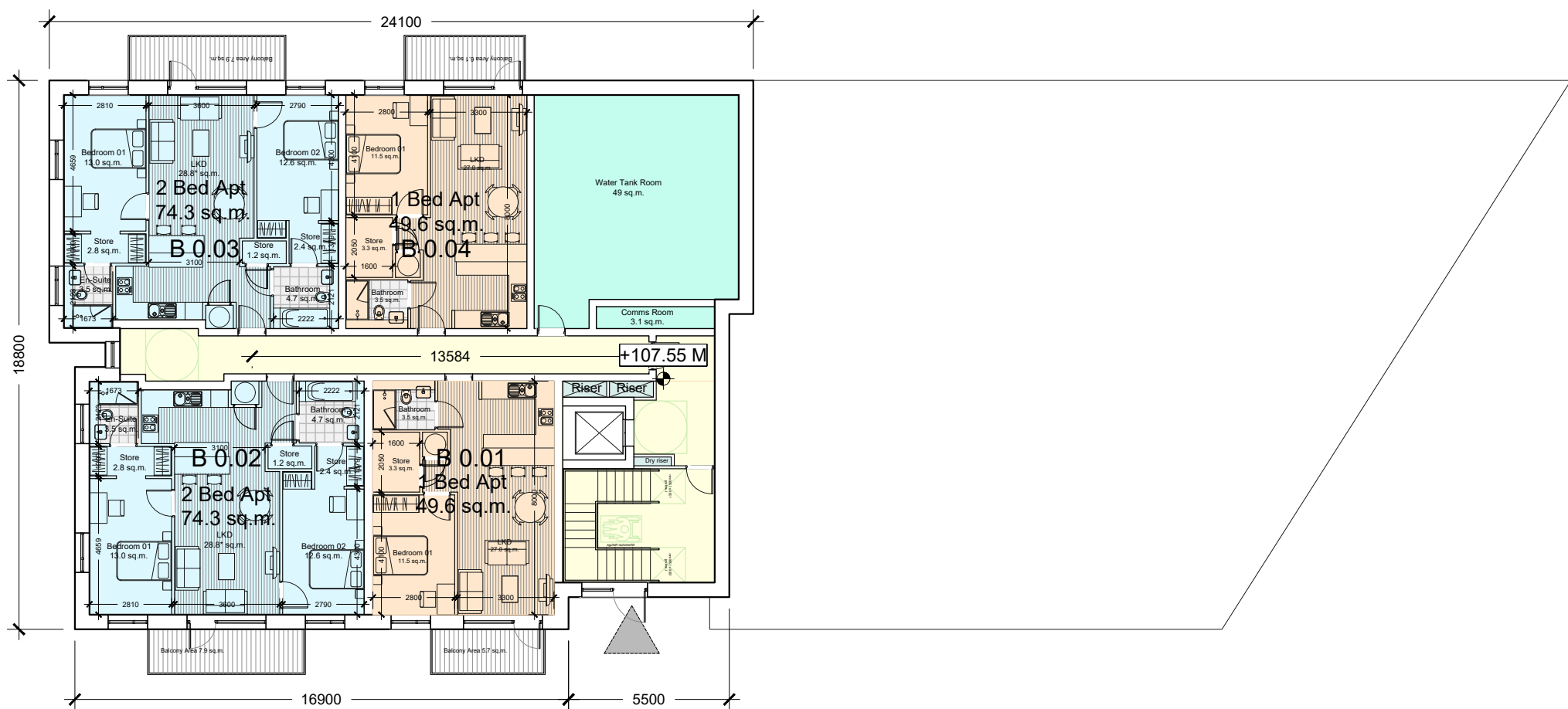


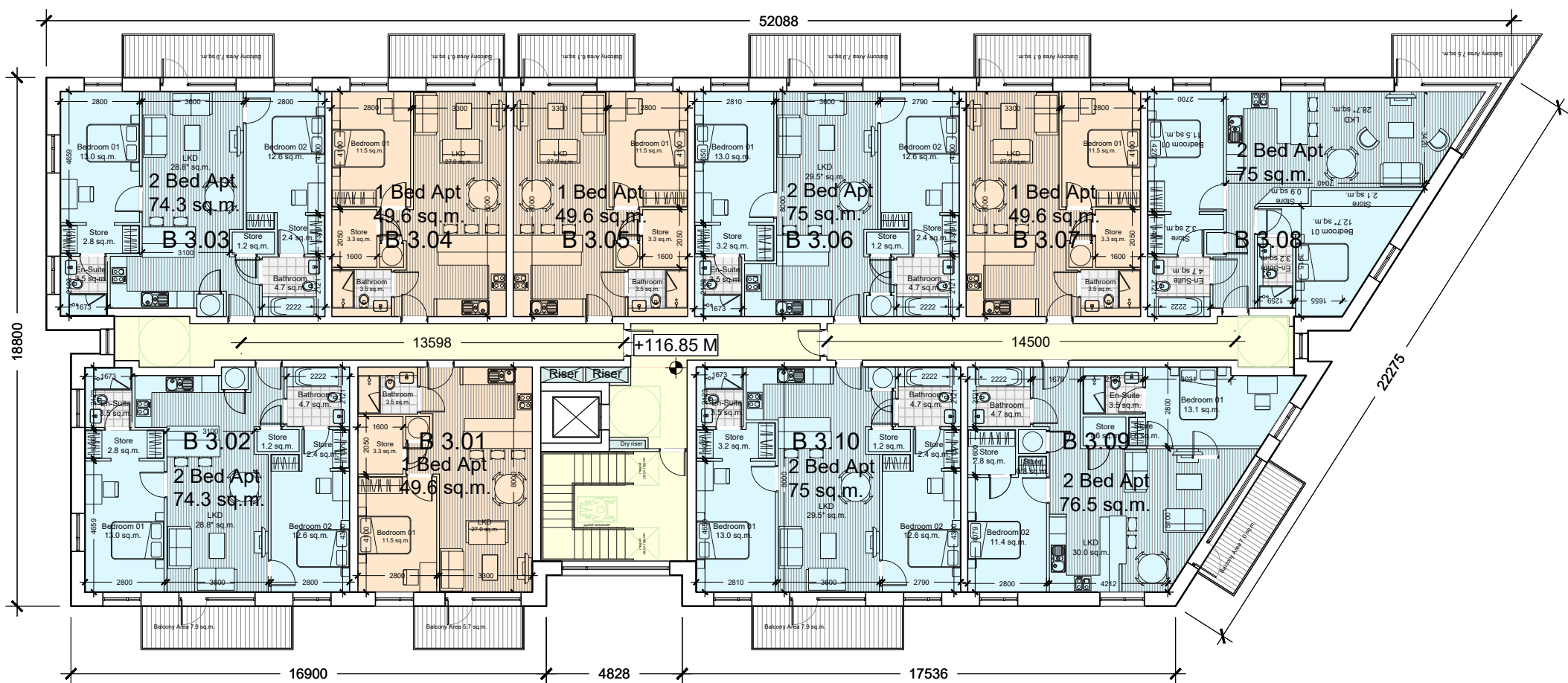


- GENERAL NOTES
1. COPYRIGHT RESERVED
  2. DO NOT SCALE DRAWING. USE FIGURED DIMENSIONS ONLY.
  3. ALL DISCREPANCIES TO BE REPORTED TO ARCHITECT
  4. THE CONTRACTOR IS RESPONSIBLE FOR CHECKING ALL LEVELS AND DIMENSIONS.
  5. ALL STRUCTURE TO BE TO STRUCTURAL ENGINEERS DETAILS.
  6. ALL MISC & ELEC SERVICES TO SERVICES ENGINEERS DETAILS.
  7. ALL PROPRIETARY ITEMS TO BE INSTALLED IN ACCORDANCE WITH MANUFACTURERS INSTRUCTIONS.
  8. CONTRACTOR IS RESPONSIBLE FOR THE COORDINATION OF STRUCTURE FINISHES AND SERVICES.

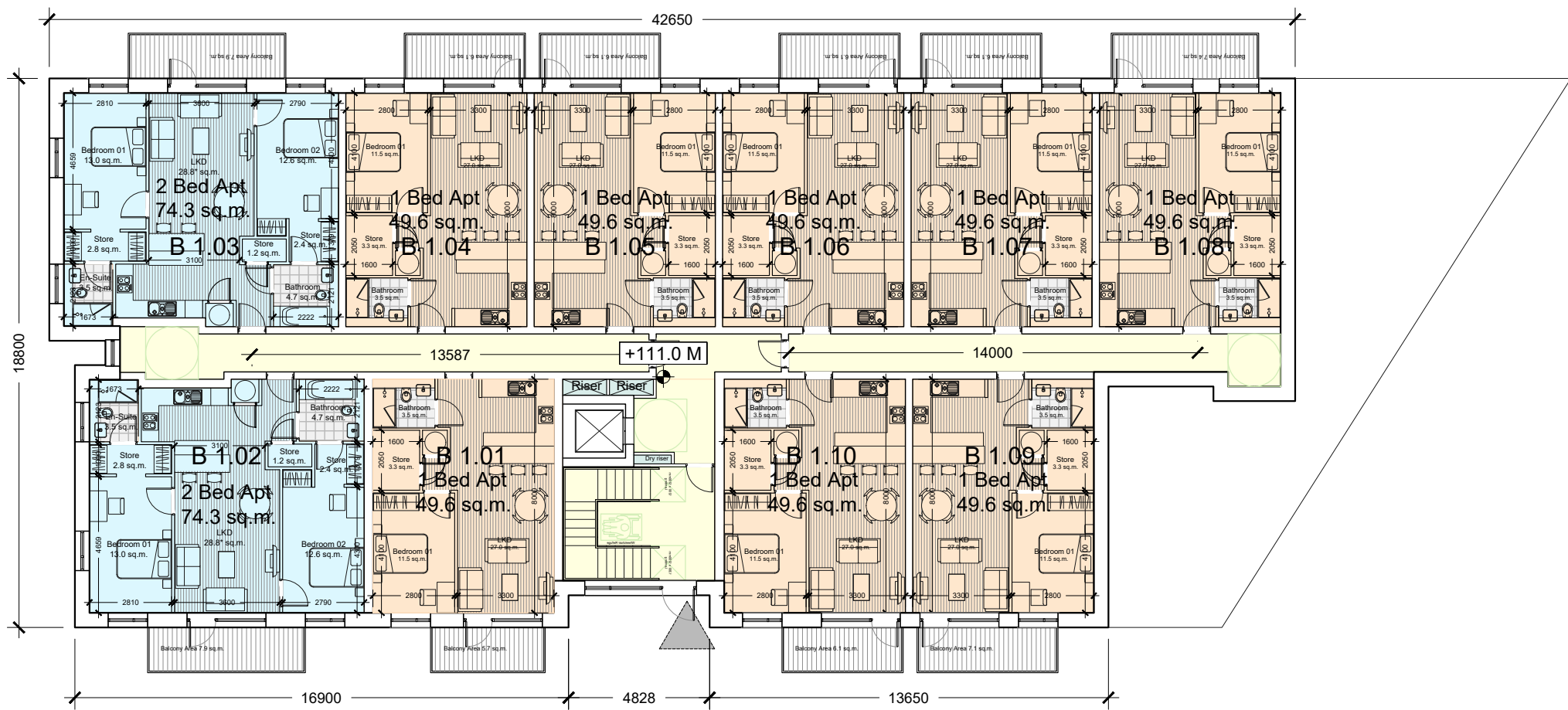
REV	DATE	DESCRIPTION	BY



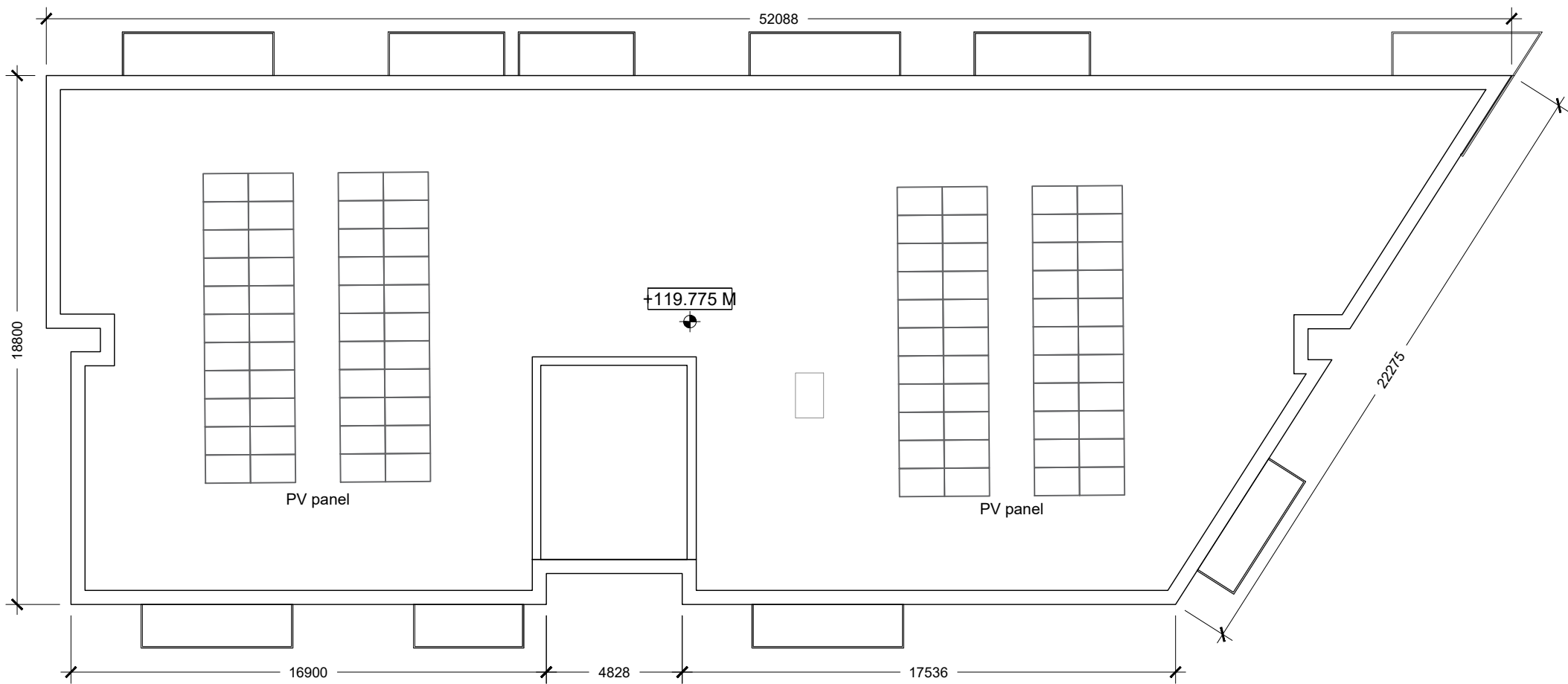
Block B\_Ground floor plan  
Scale 1:200 @ A1



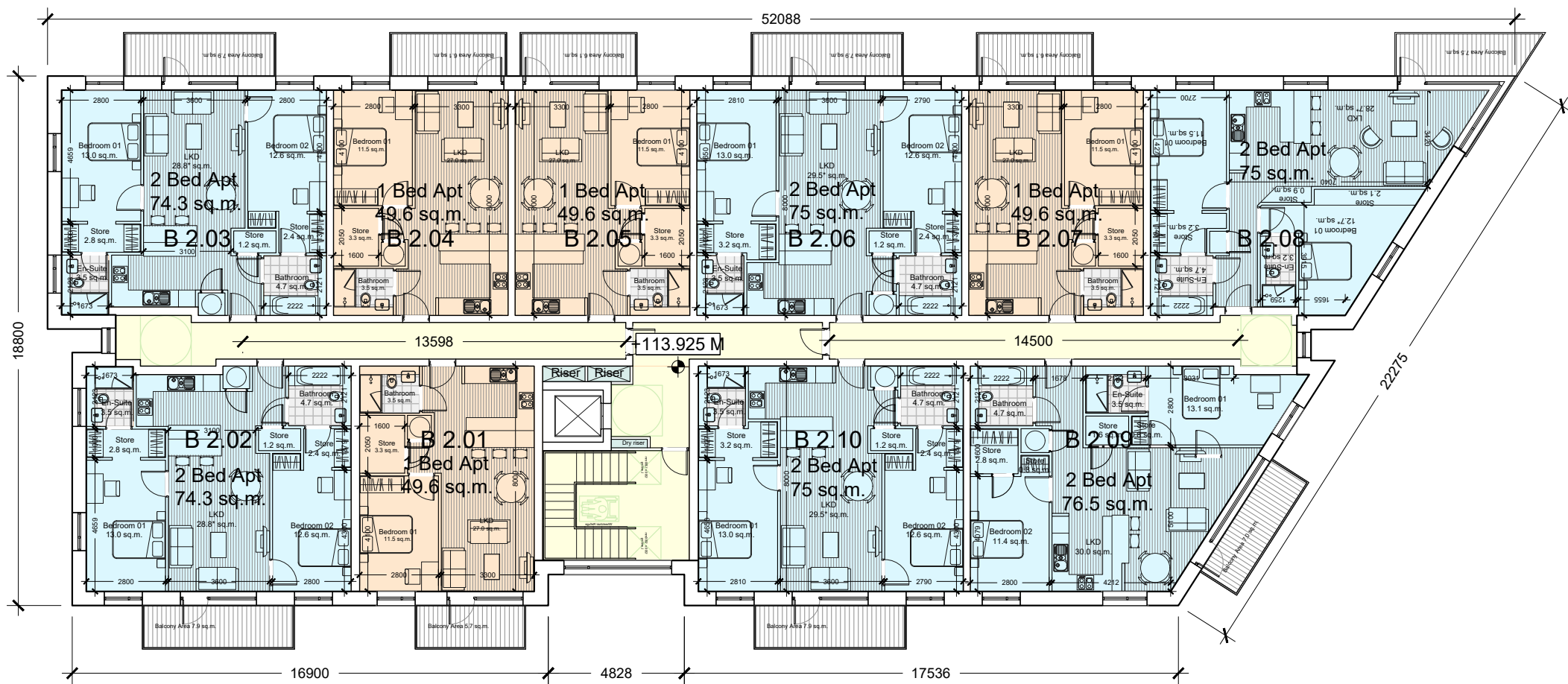
Block B\_Third floor plan  
Scale 1:200 @ A1



Block B\_First floor plan  
Scale 1:200 @ A1

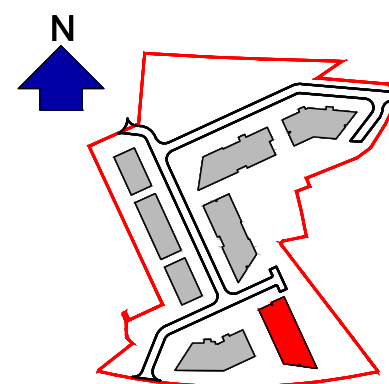


Block B\_Roof plan  
Scale 1:200 @ A1



Block B\_Second floor plan  
Scale 1:200 @ A1

- One bed apartment
- Two bed 4 person apartment
- Circulation
- Storage & Services
- Community space (Block A)
- Amenity area (Block C)



Keyplan

**JOHN FLEMING**  
ARCHITECTS

The Tree House  
17 Richview Office Park, DUBLIN 14.  
T: (01) 6689888 E: info@jfa.ie W: www.jfa.ie

CLIENT  
Ardstone Homes Ltd.

PROJECT  
White Pines East SHD  
Stocking Ave

DRAWING  
Apartment Block B  
Floor plans (ALL)

SCALE  
1:200@A1

JOB NO.  
1941

DRAWN BY  
OC+CF

DATE  
March 2021

DRAWING NUMBER  
WPE - JFA - XX - AB - DR - A- P2002

REVISION

DRAWING LOCATION  
w:\19 jobs\1941\02-planning\3.1-planning-application\3.1.2-architects-b

DRAWING STATUS  
Planning

